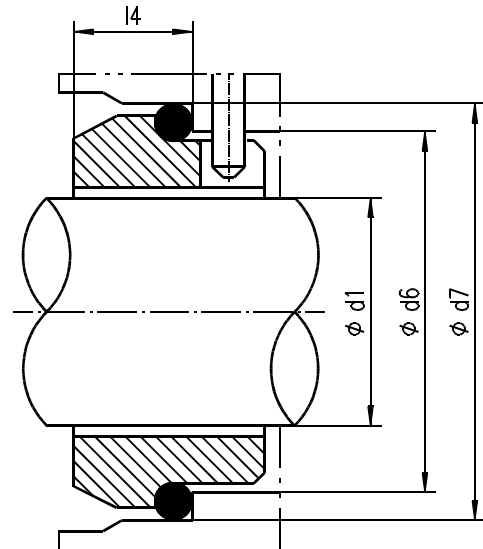


# Gegenring Type A9/A9L/A16



Werkstoffe		
Gegenring:	SIC	(U31)
	Kohle	(Z31)
	Hartmetall	(K21)
	Chromguss	(Y1)
	Keramik	(C)
	Edelstahl	(E)
	Elastomer:	Viton
EPDM		(D)
NBR		(G)
FEP		(V2)
PTFE		(T)

d <sub>1</sub>	d <sub>6</sub>	d <sub>7</sub>	Einbaulänge	Einbaulänge	Einbaulänge
			A9	A9L	A16
			l <sub>4</sub>	l <sub>4</sub>	l <sub>4</sub>
10	17,0	21,0	10,0	-	-
12	19,0	23,0	10,0	-	-
14	21,0	25,0	10,0	12,0	-
15	21,0	25,0	10,0	-	-
16	23,0	27,0	10,0	12,0	-
18	27,0	33,0	11,5	13,5	7,0
20	29,0	35,0	11,5	13,5	7,0
22	31,0	37,0	11,5	13,5	7,0
24	33,0	39,0	11,5	13,5	7,0
25	34,0	40,0	11,5	13,0	7,0
28	37,0	43,0	11,5	12,5	7,0
30	39,0	45,0	11,5	12,0	7,0
32	42,0	48,0	11,5	12,0	7,0
33	42,0	48,0	11,5	12,0	7,0
35	44,0	50,0	11,5	12,0	7,0
38	49,0	56,0	14,0	13,0	8,0
40	51,0	58,0	14,0	13,0	8,0
43	54,0	61,0	14,0	13,0	8,0
45	56,0	63,0	14,0	13,0	8,0
48	59,0	66,0	14,0	13,0	8,0
50	62,0	70,0	15,0	13,5	9,5
53	65,0	73,0	15,0	13,5	9,5
55	67,0	75,0	15,0	13,5	9,5
58	70,0	78,0	15,0	13,5	10,5
60	72,0	80,0	15,0	13,5	10,5
63	74,0	83,0	15,0	13,5	10,5
65	77,0	85,0	15,0	13,5	10,5
68	81,0	90,0	18,0	13,5	11,0
70	83,0	92,0	18,0	14,5	11,5
75	88,0	97,0	18,0	14,5	11,5
80	95,0	105,0	18,2	15,0	11,5
85	100,0	110,0	18,2	15,0	11,5
90	105,0	115,0	18,2	15,0	13,0
95	110,0	120,0	17,2	15,0	13,0
100	115,0	125,0	17,2	15,0	13,0

Änderungen jederzeit vorbehalten